

MONTHLY MEMBERSHIP PROGRESS REPORT

District 26 M5

Results as of: 11/30/2019

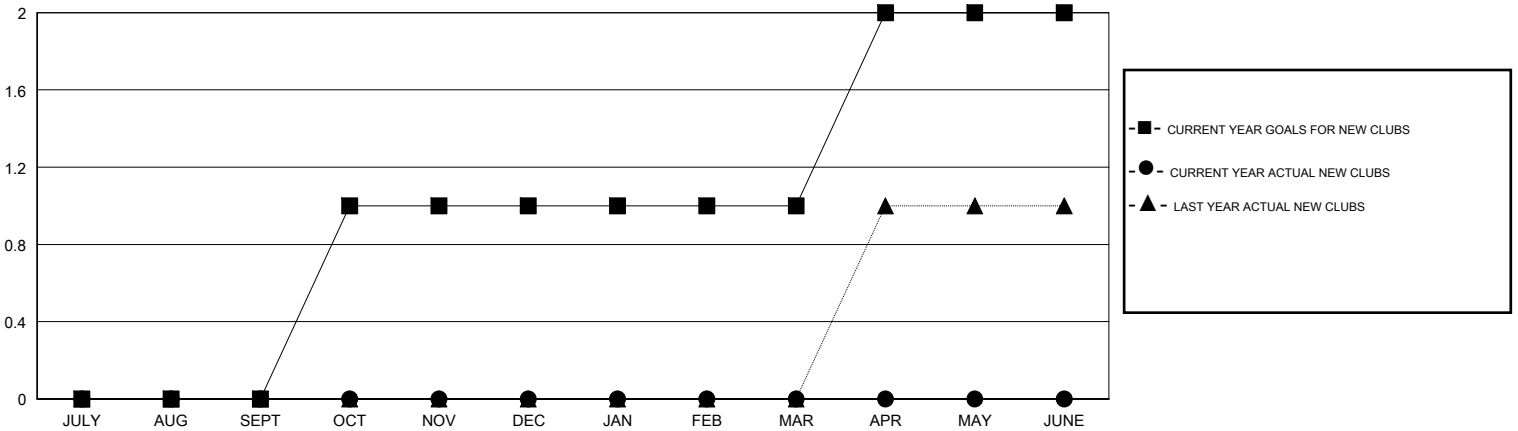
GMT:

LOCATION MISSOURI

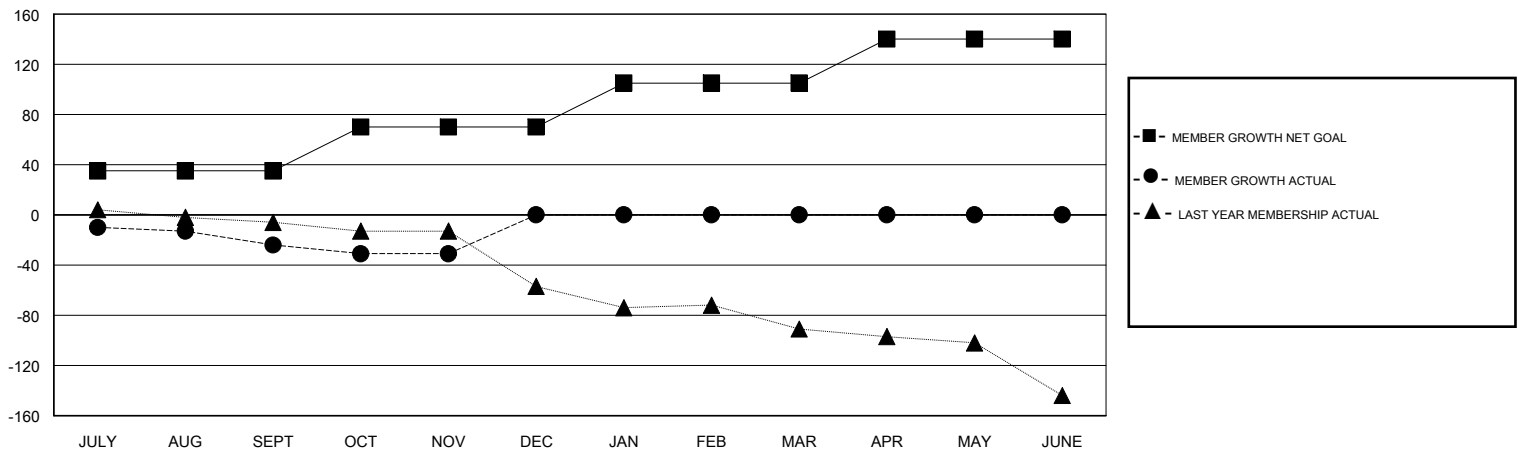
GMT CA

Clubs				Members			
RESULTS FOR 2019-2020				RESULTS FOR 2019-2020			
QUARTER	NEW CLUB GOAL	NEW CLUBS	DROPPED CLUBS	QUARTER	MEMBER GROWTH NET GOAL	MEMBER GROWTH ACTUAL	DROPPED MEMBERS ACTUAL (including transfers)
JULY/AUG/SEPT	0	0	0	JULY/AUG/SEPT	35	24	45
OCT/NOV/DEC	1	0	0	OCT/NOV/DEC	35	9	15
JAN/FEB/MAR	0	0	0	JAN/FEB/MAR	35	0	0
APR/MAY/JUNE	1	0	0	APR/MAY/JUNE	35	0	0

GOALS AND ACTUAL NEW CLUBS CUMULATIVE



GOALS AND ACTUAL MEMBERS CUMULATIVE



DROPPED CLUBS: 0	17 CLUBS OF 51 ADDED 1 OR MORE NEW MEMBERS	<u>GENDER DISTRIBUTION</u> MALE 741 (65.29%) FEMALE 394 (34.71%)
DROPPED MEMBERS DECEASED 1 CLUB CANCELLED 0 OTHER 59 <hr/> TOTAL 60	CLICK HERE FOR CUMULATIVE MEMBERSHIP DATA	TOTAL FAMILY UNIT MEMBERS 246 FAMILY MEMBERS PAYING HALF DUES 127